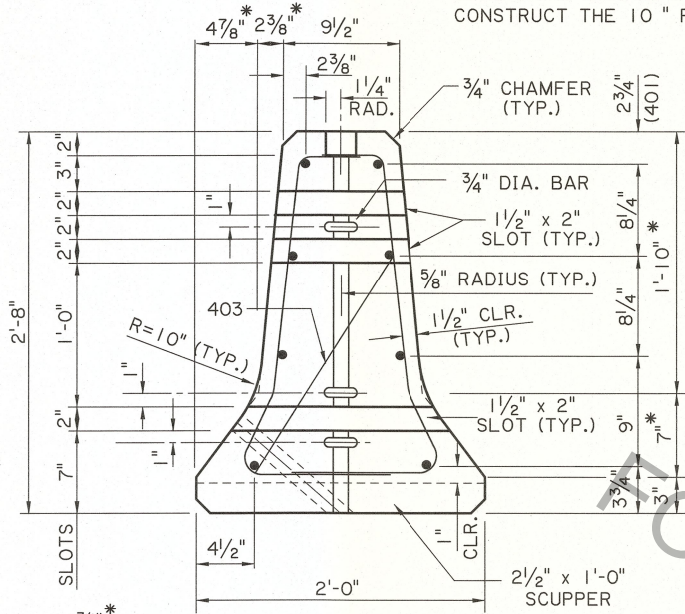
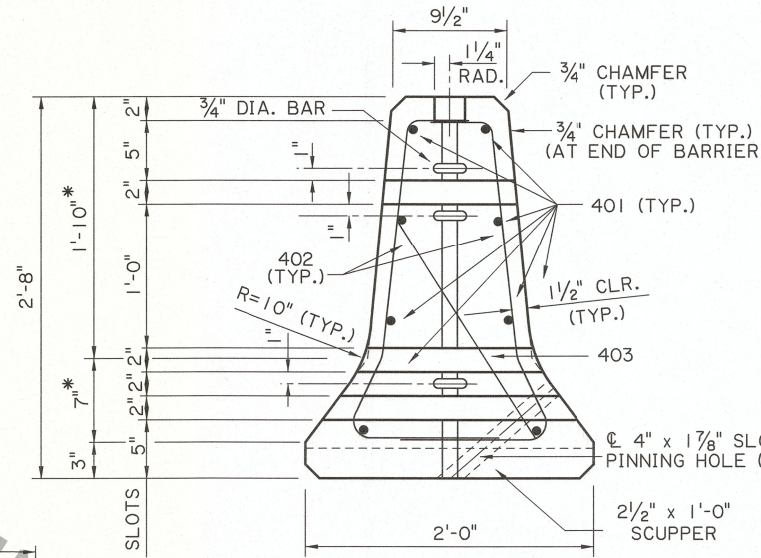


* DIMENSIONS MARKED THIS ARE TO THE INTERSECTION POINT OF THE BARRIER SLOPES. CONSTRUCT THE 10" RADIUS TO PROVIDE A SMOOTH TRANSITION BETWEEN THE SLOPES.

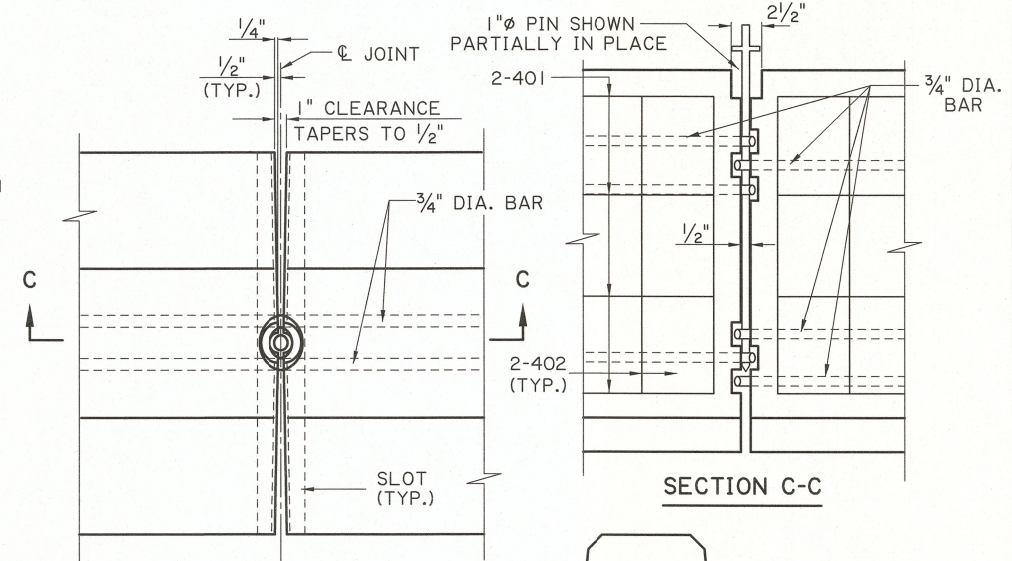


SECTION A-A



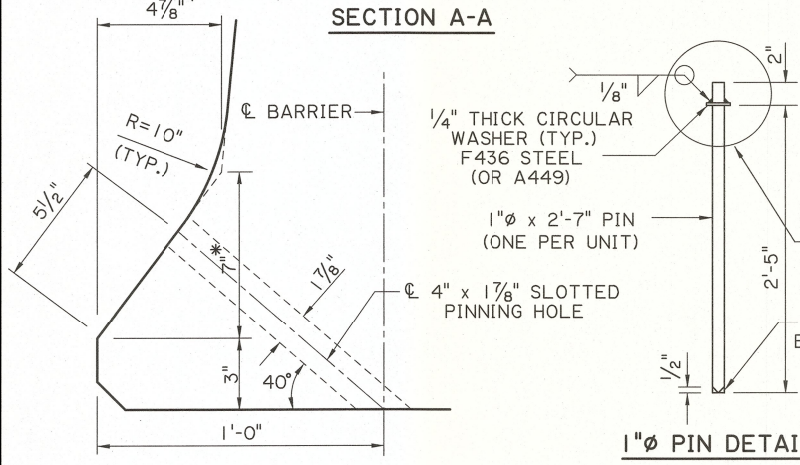
SECTION B-B

DETAIL "B"



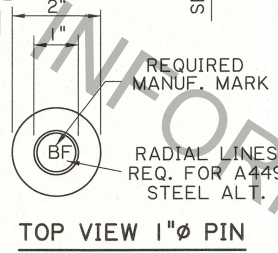
PLAN AT JOINT

SECTION C-C

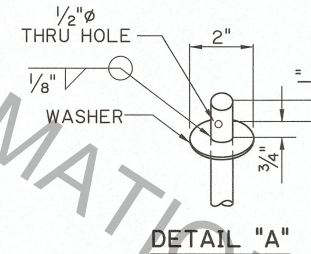


DETAIL SHOWING 10" RADIUS

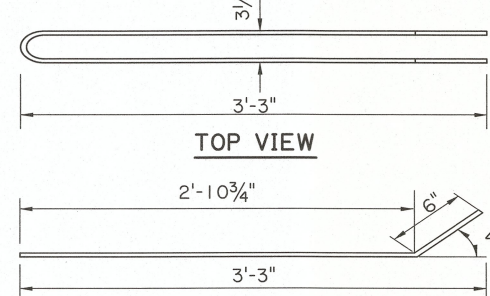
(TO BE INSERTED BETWEEN BARRIERS)



TOP VIEW 1"Ø PIN

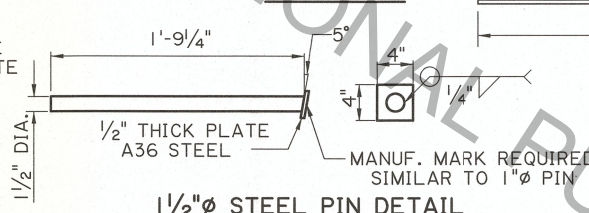


DETAIL "A"



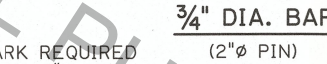
TOP VIEW

SIDE VIEW

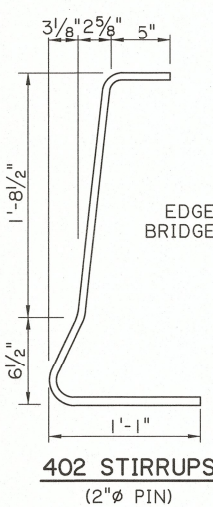


1 1/2"Ø STEEL PIN DETAIL

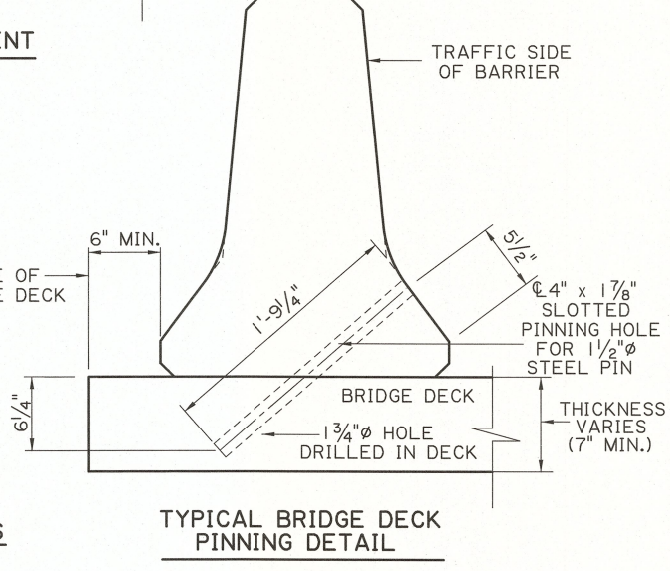
(TO BE USED FOR BRIDGE DECK APPLICATION)



3/4" DIA. BAR (2"Ø PIN)



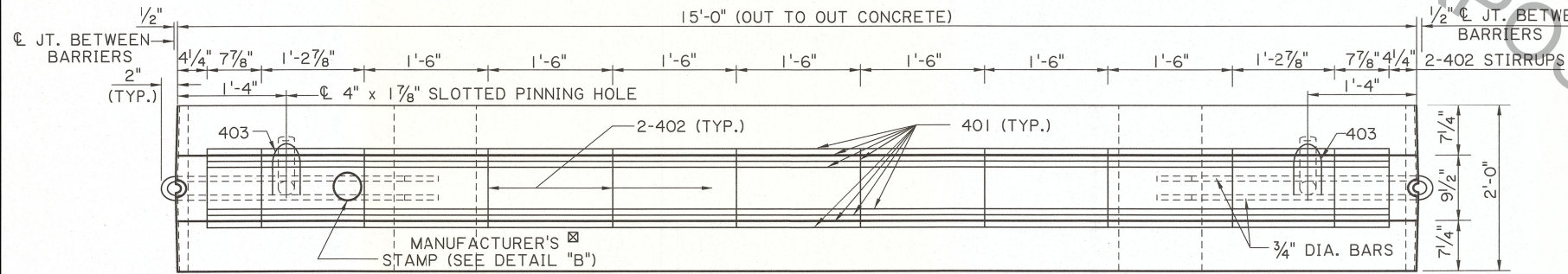
402 STIRRUPS (2"Ø PIN)



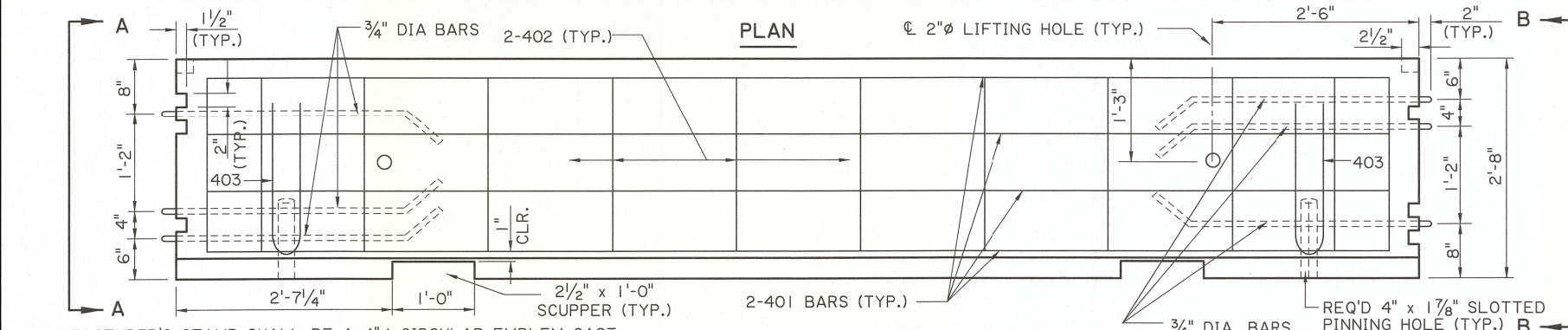
TYPICAL BRIDGE DECK PINNING DETAIL

NOTES:

- 1"Ø PIN SHALL CONFORM TO ASTM A193 GR B7 OR ASTM A449. 1/2"Ø PIN AND 3/4" DIA. BAR SHALL CONFORM TO ASTM A36.
- ALL REINFORCING STEEL SHALL HAVE A YIELD STRENGTH, fy=60 ksi. ALL REINFORCING STEEL SHALL BE 2" CLEAR FROM FACE OF CONCRETE, UNLESS OTHERWISE NOTED.
- CONCRETE SHALL BE CLASS A1. FOR TEMPORARY CONCRETE BARRIERS, SURFACE RESISTIVITY REQUIREMENTS IN THE STANDARD SPECIFICATIONS SHALL NOT APPLY AND TABLE 901-6, ACCEPTANCE AND PAYMENT SCHEDULES FOR STRUCTURAL CONCRETE (SURFACE RESISTIVITY), WILL NOT BE ENFORCED.
- UPON COMPLETION OF PROJECT, THE CONTRACTOR SHALL REMOVE AND TRANSPORT THE BARRIER UNITS AS DIRECTED BY THE PROJECT ENGINEER.
- GALVANIZING: 1"Ø & 1/2"Ø PIN AND 3/4" DIA. BAR SHALL BE GALVANIZED IN ACCORDANCE WITH ASTM A-123.
- BRIDGE DECK PINNING: WHEN REQUIRED, THE BARRIER PINNING HOLES PROVIDE A METHOD OF LATERALLY RESTRAINING THE BARRIER. EACH BARRIER SHALL REQUIRE TWO HOLES DRILLED INTO THE BRIDGE DECK AS DETAILED, SO THAT TWO PINS MAY BE PLACED INTO THE BARRIER HOLES AND INTO THE DECK. UPON BARRIER REMOVAL, THE DECK HOLES SHALL BE REPAIRED WITH NON-SHRINK GROUT AS DIRECTED BY THE ENGINEER.
- PAYMENT: QUANTITIES SHOWN ARE FOR ESTIMATION PURPOSES ONLY. CLASS A1 CONCRETE, REINFORCING STEEL, STEEL BARS, PINS, WASHERS, DRILLING & GROUTING FOR BRIDGE DECK PINS, AND GALVANIZING ARE TO BE INCLUDED IN THE PRICE FOR "TEMPORARY PRECAST CONCRETE BARRIER".
- PRECAST TEMPORARY CONCRETE BARRIERS SHALL ONLY BE PRODUCED BY A MANUFACTURER LISTED ON THE APPROVED MATERIALS LIST.



PLAN



ELEVATION

MANUFACTURER'S STAMP SHALL BE A 4"Ø CIRCULAR EMBLEM CAST INTO THE TOP FACE OF THE RAIL AND CENTERED 1'-9" FROM THE END OF THE BARRIER. THIS EMBLEM SHALL DISPLAY THE MANUFACTURER'S NAME, LOGO, OR INITIALS, ALONG WITH THE YEAR IN WHICH THE BARRIER WAS FABRICATED (EX. 08) AND THE NUMBER OF THE LATEST REVISION SHOWN ON THIS DETAIL (EX. R0, R1, ETC.).

THESE DETAILS HAVE BEEN SUCCESSFULLY CRASH TESTED AS AN NCHRP 350 TEST LEVEL 3 BARRIER AND SHALL BE USED IN WORK ZONES PARALLEL TO THE DIRECTION OF TRAFFIC.

ESTIMATED QUANTITIES-ONE (1) 15'-0" PRECAST BARRIER				
BAR NO.	UNIT LENGTH	TOTAL LENGTH	LOCATION	
401	8	14'-4"	114'-8"	LONGITUDINAL
402	24	3'-9"	90'-0"	STIRRUPS
403	2	3'-11 5/8"	7'-11 1/4"	PINNING HOLE
TOTAL NO. 4 BARS = 212'-7 1/4" = 142 LBS.				
DEFORMED REINFORCING STEEL=142 LBS.				
6-3/4" DIA. BAR (A 36 STEEL) = 41'-9" = 63 LBS.				
CLASS A1 CONCRETE= 1.76 CU. YDS.				
BARRIER WEIGHT= 7,136 LBS.				



SHEET NUMBER

DESIGNED BY: K. BRAUNER
CHECKED BY: P. FOSSIER

CONTROL SECTION: C. GRASS
CHECKED BY: K. BRAUNER

REVIEWED BY: JULY 2008
REVISION #

DATE: 11/30/17
REVISED: 9/8/2017
UPDATED: 2/9/2017

PROJECT: TEMPORARY PRECAST BARRIER F SHAPE

STATE: LA
COUNTY: ORLEANS

DOTD
DOT BRIDGE DESIGN